

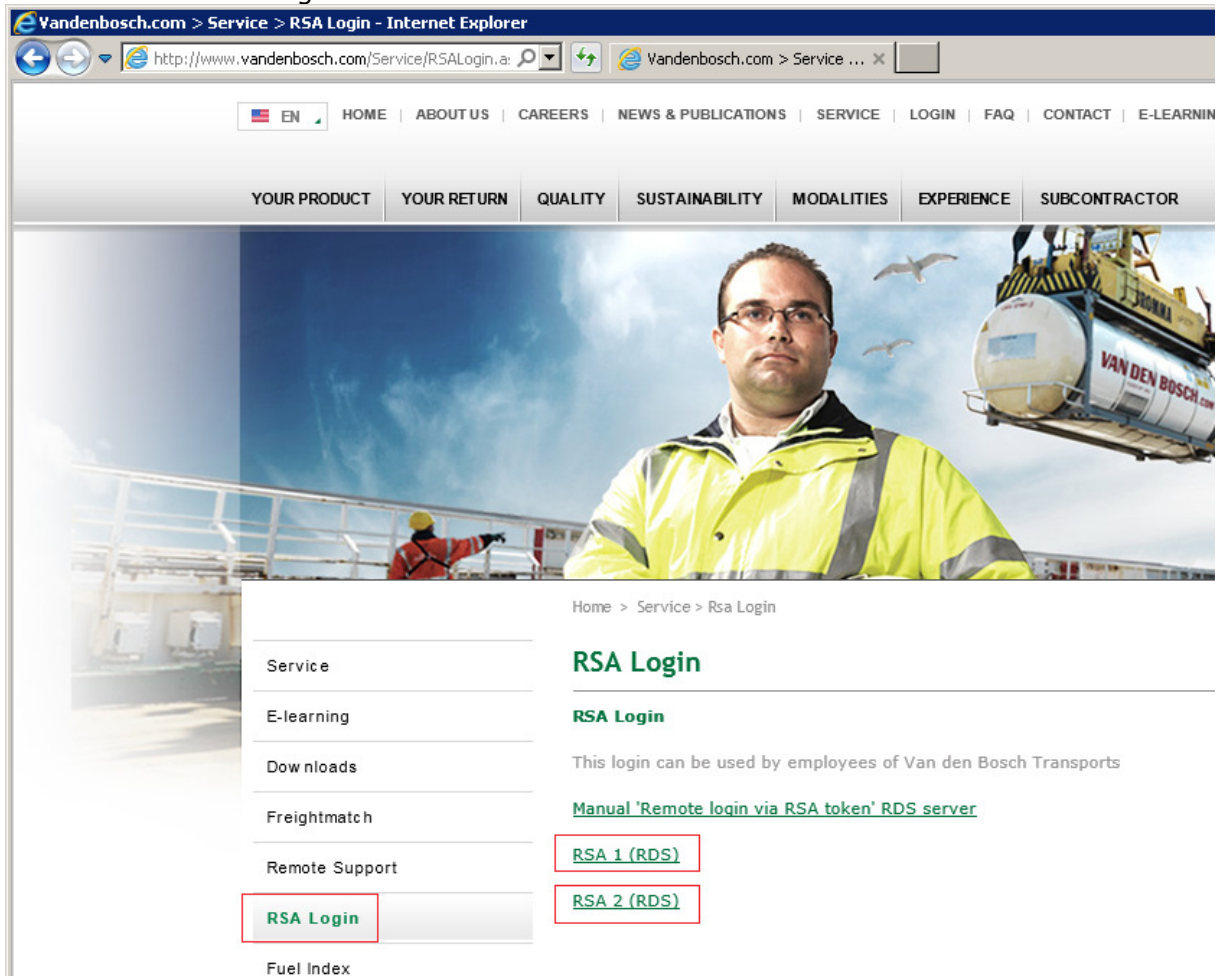
Remote log-in using RSA token

Open our website: www.vandenbosch.com

- Choose Service,

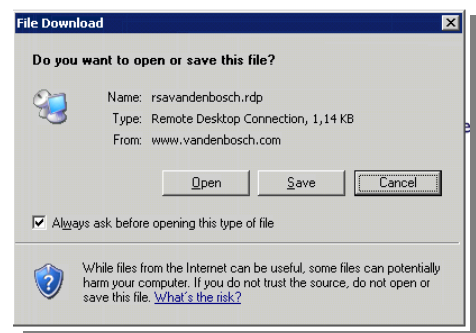


You'll see the following screen:



- Click on RSA1, or RSA2.
- A new screen will pop-up, with the question 'do you want to open or save this file?'

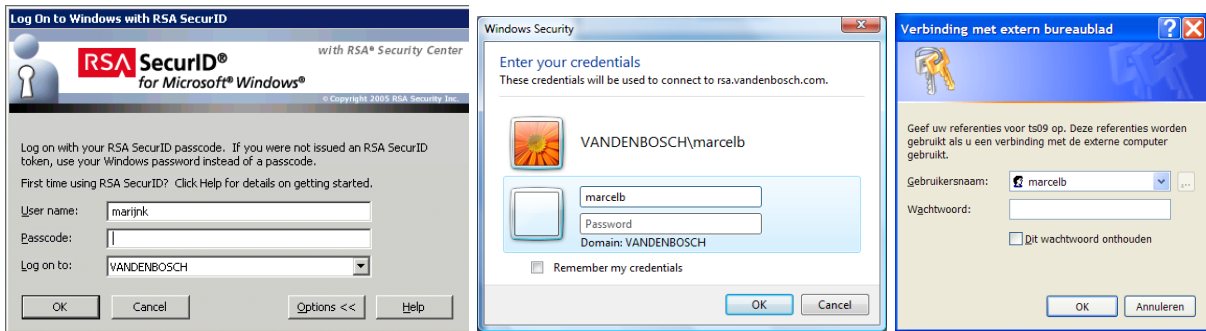
Choose Open



Do you want to open or save **rsa1vandenbosch.rdp** (1,24 KB) from **vandenbosch.com**?

Open Save Cancel

One of the following screens will pop-up:



1.

2.

3.

1. Read further below, at 'RSA log-on procedure'.
2. First follow the steps on **page 5**, then read further at 'RSA log-on procedure'.
3. First follow the steps on **page 6**, then read further at 'RSA log-on procedure'.

1. RSA log-on procedure

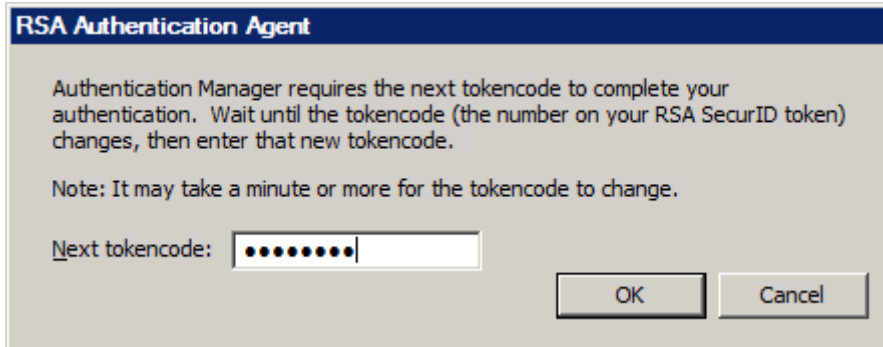
- **Username:**
The username you normally use to log on
- **Passcode:**
 - number in the display on your RSA token
 - the 'company number' you received from the IT department for SMS Authentication.
- **Log on to:**
vandenbosch



The number on the token or in the SMS can be used 1 time. It will change every 1 minute. After 3 times of typing the wrong number your access will be locked and can only be unlocked by the ICT Department at van den Bosch in Erp.

When you login with **SMS Authentication** you have to enter the Passcode which you received on your mobile phone:

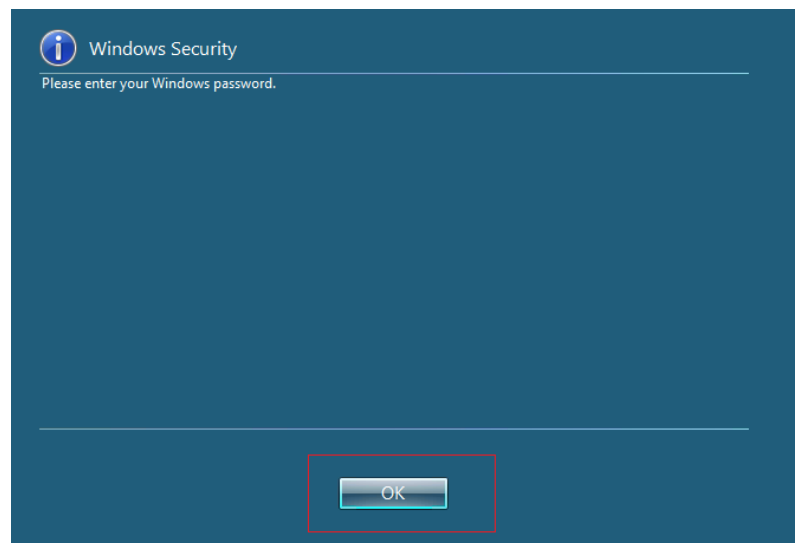




Use the Tokencode which you received in the SMS

The following screen appears:

- Click OK



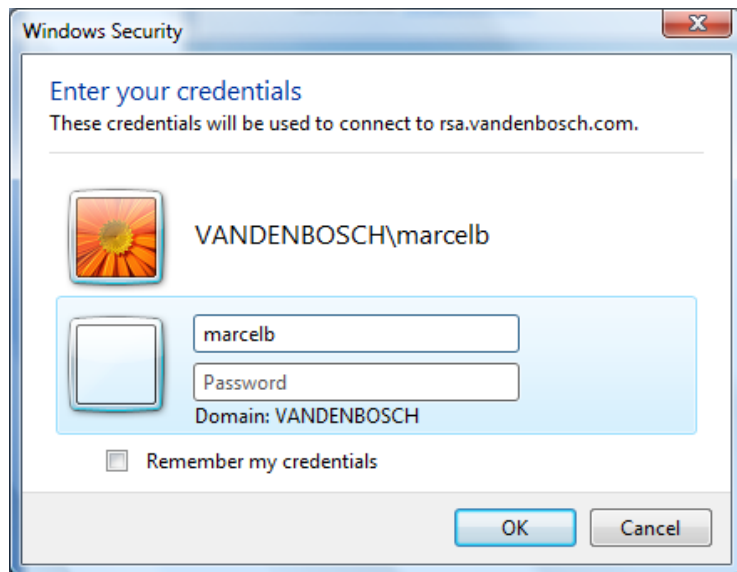
- Enter your usual Windows password in the following screen:



After this, you'll get on our network.

2. Windows vista

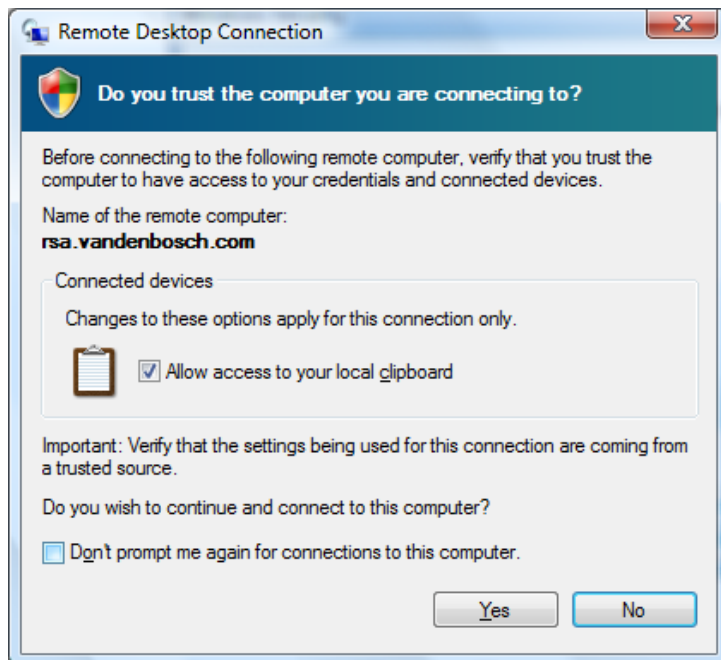
If you use Windows Vista, you'll get this screen:



Fill in your username and password.

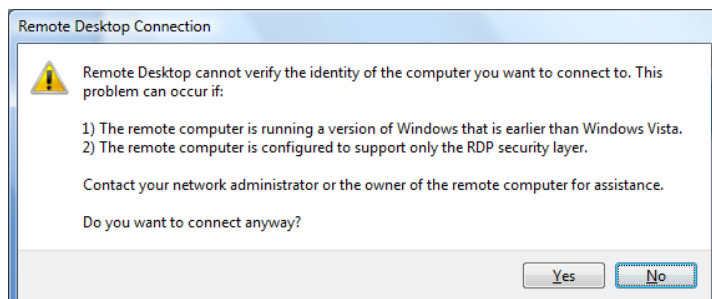
Finally, choose OK

You'll get this warningscreen.



Choose Yes

A new warningscreen will appear.



Again, choose Yes.

Now follow the procedure at **1. RSA log on procedure**

3. Windows with Remote desktop client 6.x

Some Windows-versions use a different way of making a connection through RSA. You'll first get this screen:

Fill in your username and password.

Choose OK



Verbinding met extern bureaublad

Geef uw referenties voor ts09 op. Deze referenties worden gebruikt als u een verbinding met de externe computer gebruikt.

Gebruikersnaam: marcelb

Wachtwoord:

Dit wachtwoord onthouden

OK Annuleren

Now follow the procedure at **1. RSA log on procedure**

System requirements:

1. 'RDP client' must be installed on the computer.
It's automatically installed on Windows XP and Higher.

You can download the RDP Client installer here:

<http://www.microsoft.com/downloads/details.aspx?FamilyID=80111f21-d48d-426e-96c2-08aa2bd23a49&DisplayLang=en>

2. On a Mac-book download the RDP client from:
<http://www.microsoft.com/en-us/download/details.aspx?id=18140>
3. Port 3389 must be open on your firewall. This is the Remote Desktop Protocol for Terminal services.
4. Minimum screen resolution of 1280x1024